

Highline Electric Opener

MECHANICAL
GUARANTEE
12 MONTHS

Carl F
Groupco
glonbo
Call 3

- Strong die-cast aluminium body
- Continuous beep if not set up correctly, if obstructed or not closed fully
- VCS panels can drive two or three wire electric actuators
- 24V battery backup with charge and low battery condition monitoring
- 240V and 12V failure monitor
- Various control panels available

Highline electric window controls for single, group and zoned operation from manually operated switches or automated control panels linked to a variety of sensors that can, if required, be used in conjunction with existing alarm systems.

Technical Information:

Actuator – ACK4

Voltage supply:	24V dc	230V ac
Stroke:	100 – 400mm	100 – 400mm
Thrust force:	300N	300N
Absorbed current:	1.35A	0.32A
Speed:	18mm/s	28mm/s
Protection class:	IP 55	IP 55
Wiring:	2 Core	3 Core
Colours available:	White/Black /Silver	White/Black /Silver
Limit stop:	Electronic	Electronic
Safety stop:	Electronic	Electronic

ACK4 OPERATOR

Automated control panels – for use with electric openers

A range of automated control panels are available for numerous add-ons that can be used for operation in any home or commercial building.

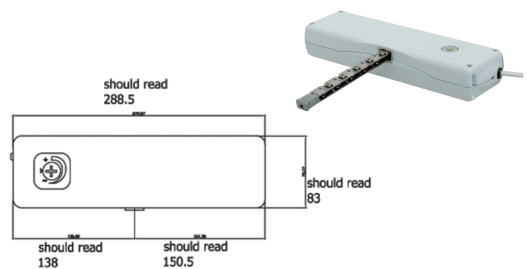
The VCS panels are easy to operate and need very little maintenance, and once installed the system is totally automatic and any single control panel can operate one of the additional items listed below:

- Thermostat
- Smoke sensor
- Break glass switch
- Rain sensor
- S50 switches
- VCS control panel

If connected with the smoke detectors, it will work in conjunction with most existing Fire Alarm systems, and when activated the signals from the fire alarm will cause the sensors to activate and open the smoke vents.

Material Specification

Strong die-cast aluminium body with rigid or pivot fixing option and various brackets and extensions to suit most applications.



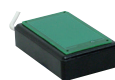
Thermostat



Smoke Sensor



Break Glass Switch



Rain Sensor



S50 Switches



VCS Control Panel