

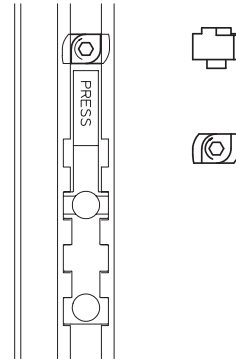
PN UNI by Roto Accessories



Blocking Device

The blocking device allows the inbuilt restrictor to be used in the initial restrictor position for opening and closing only. To open the window further for cleaning, the block has to be removed. This must be replaced after the window is cleaned. Key locking version available to order.

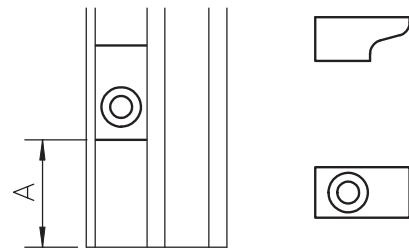
Part Code	Description	Box Qty
3906	Blocking Device with allen key locking	20



Stop Block

The stop block can be used to restrict the reversal of the sash when cleaning. It is fitted to the glider track and must be positioned to allow the first reverse inbuilt restrictor to engage. Distance A can vary depending on condition on site. Always ensure that the first reverse held position is engaged before fitting.

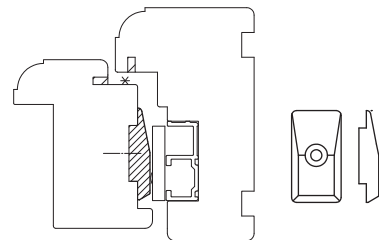
Part Code	Description	Box Qty
3820	Stop Block	20



Guide Block

Position on the vertical stiles of the sash in line with the rivet on the bottom arm, to help centralise the sash to inner frame and prevent excessive sideways movement.

Part Code	Description	Box Qty
3769	Guide Block	100



Support Hardware for PAS 24

Provides support at the head of the window tested to PAS 24.

Part Code	Description	Box Qty
3822	Support Hardware	100

