

FUHR Door Locks

855 Type 3, Type 1, Type 2 & Type 8



- Reversible latch and deadbolt
- Variable handle height – supplied at 1020mm
- FUHR silver corrosion resistant surface finish
- Profile related locking plates
- Key operated door locks

FUHR multisafe multipoint door locks are renowned for their ease of use, reliability and durability. Profile specific keeps ensure secure fastening to the outer frame.

The FUHR 855 door locks are operated using the key, which engages and disengages the locking points. Two full turns of the key are required to fully engage the locking points. Instead of a lever handle, a fixed pad is used on the outside of the door and the key used to operate the latch. From the inside, the latch can be operated using a lever handle.



855 Technical Information:	Throw:
■ Faceplate: 16mm x 3mm	■ Deadbolt: 20mm
■ Backset: 35 and 45mm	■ Hook bolt: 20mm
■ PZ centre: 92mm	■ Round bolt: 20mm
■ Spindle size: 8mm	■ Roller cam travel: 19mm
■ Clearance required behind backset: 18mm	■ Roller cam adjustment: +/- 0.8mm

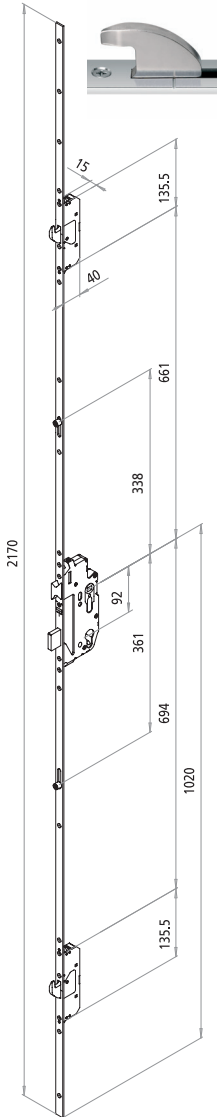
Description	Part Code	Box Qty
FUHR 855 Type 3 – 35mm		
2 Hooks, 2 Rollers, Latch & Deadbolt	M2352D68SS	5
FUHR 855 Type 1 – 35mm		
4 Roller Cams, Latch & Deadbolt	M2352D18SS	5
FUHR 855 Type 2 – 35mm		
2 Rollers, 2 Mushrooms, Latch & Deadbolt	M2352D28SS	5
FUHR 855 Type 8 – 35mm		
2 Round Bolts, 2 Rollers, Latch & Deadbolt	M2352D98SS	5

Also available in 30mm and 45mm backset.

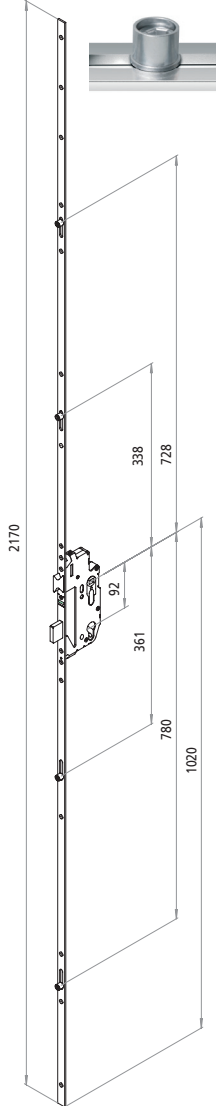
CYCLE TESTED
200,000
CYCLES

MECHANICAL
GUARANTEE
10
YEARS

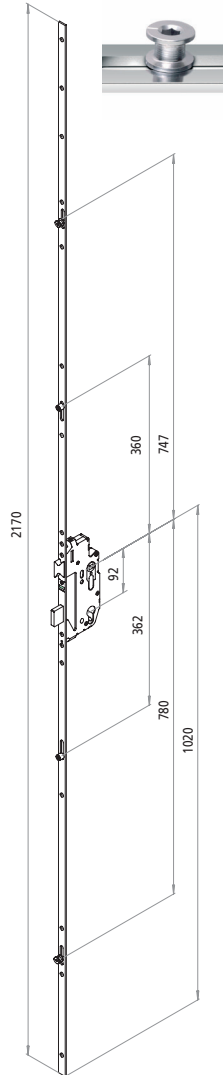
Type 3



Type 1



Type 2



Type 8

